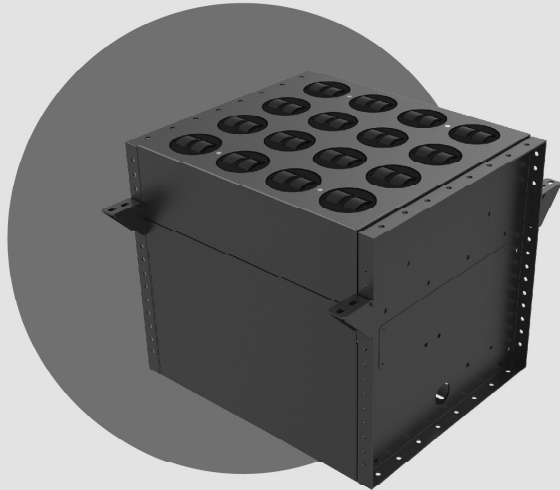


O-belt Swivel Wheel Sorter 1P (L+N) AC220V



Size: Inner width between frame (mm) × Total length L (mm) with

517×500×1turning speed ≤ 1.6m/s	617×500×1turning speed ≤ 1.6m/s	717×750×2turning	817×750×2turning	917×750×2turning
517×750×2turning	617×750×2turning			

Sorting angle: 30°;45°

Driving power(kw): AC220V-0.2kw for transfer
AC220V-0.4kw x N (Turning QTY) for turning

Brand of motor : JSCC(Transfer) ,
Delta/Inovance(Turning)
All have cabinet but Non-PLC.

Conveying speed(m/min): 36~100m/min

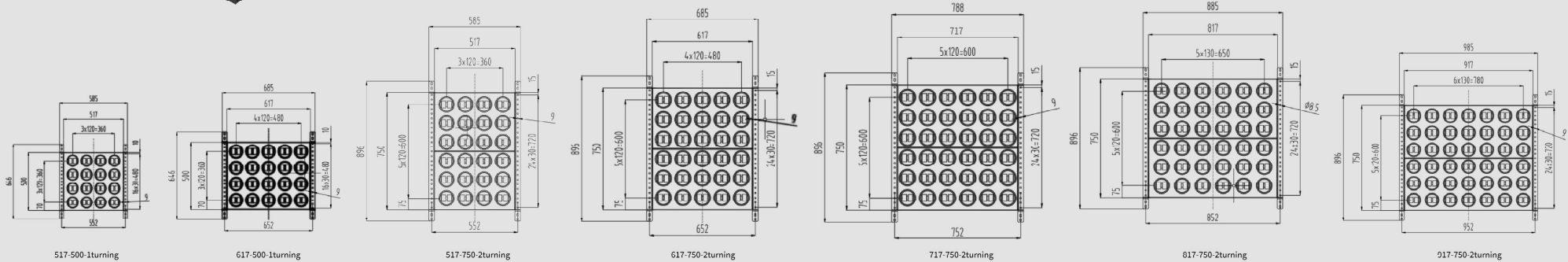
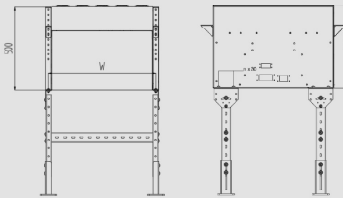
Voltage(V): AC220V/1Ph/50Hz

Transfer speed is adjustable by reduced motor

Thickness (mm): ≥500 (other height can be customized)

Others request:

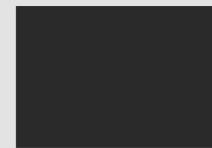
Special size can be discussed with Damon



Other description

O-belt Swivel wheel sorter is driven by a motor to rotate the roller through O-belt, the roller drives the wheel to rotate through another O-belt, and the wheel turning is by another servo motor to achieve sorting. As an independent module, swivel wheel sorter will be possible to be change the position of the system, combine with belt conveyor or roller conveyor. Suitable for the conveyed goods with flat bottom; cost effective; low noise.; No need air supply.

- Module height: 500mm
- Sorted goods Min: 150 (L) x 150 (W) x 10 (H) mm, 0.5kg; Max: 1000 (L) x 800 (W) x 700 (H) mm, 30kg (standard)
- Horizontal installation, Standard model includes side plate.
- Can be used in G5 series conveyor and sorting system.
- Sorting direction: lateral sorting; bilateral sorting.
- Frame and support leg color: RAL7016 high light.



RAL7016

